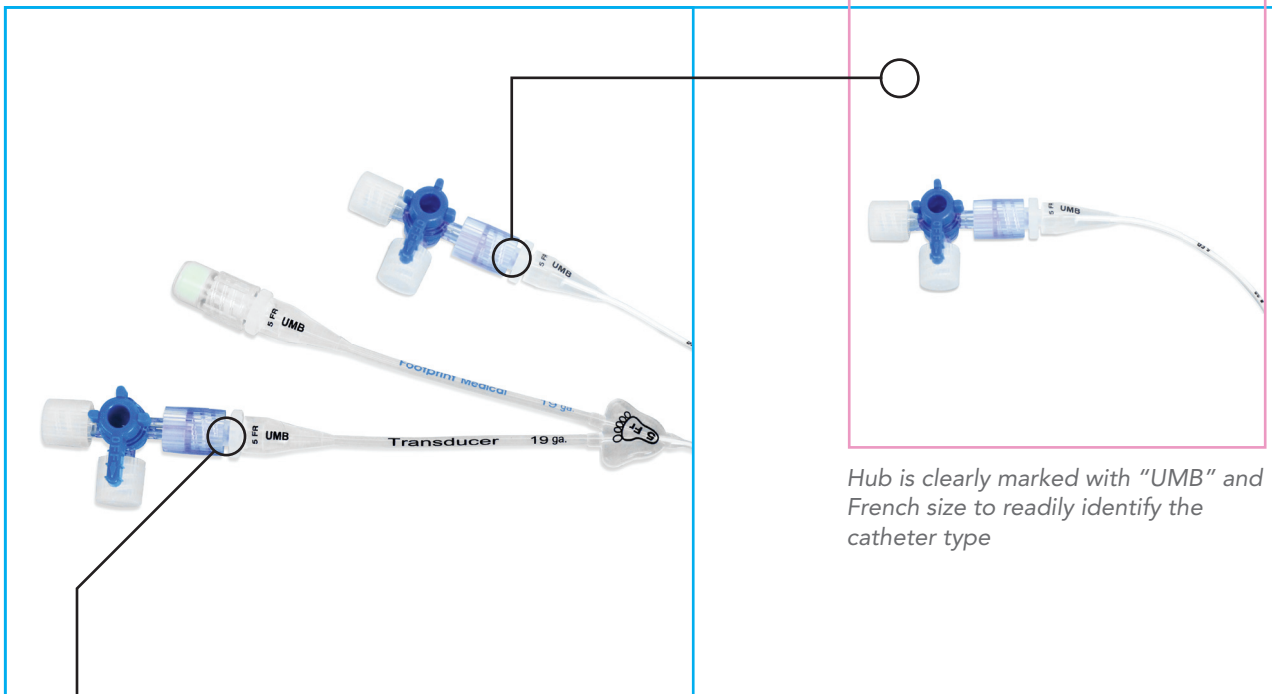
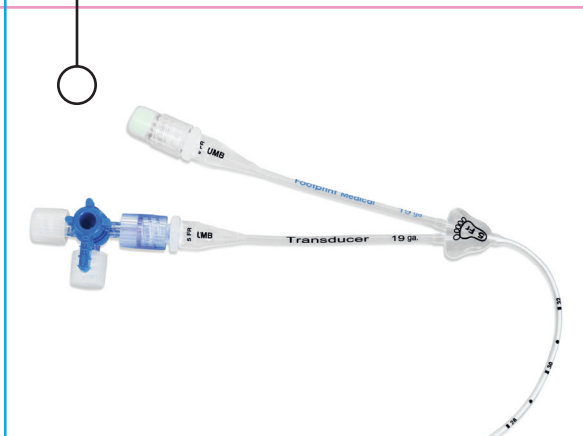


Umbilical Catheters



Hub is clearly marked with "UMB" and French size to readily identify the catheter type

Dual lumen hubs are color coded and clearly labeled for size and transducer use



Umbilical Catheters

- Clear, indelible markings allow for accurate placement, line identification, and assessment.
- Made of soft, biocompatible medical grade silicone
- Bold indelible markings every centimeter
- Latex free. No DEHP or other plasticizers
- Radiopaque stripe for confirmation of tip placement by x-ray
- Smooth tip surface designed to reduce thrombogenicity



Ordering Information for:
Umbilical Catheters



Silicone Umbilical Catheters

| | | | |
|------------|--|---------|------|
| S1UVC-3540 | Silicone Umbilical Catheter (Single Lumen) | 3.5 Fr. | 5/cs |
| S1UVC-540 | Silicone Umbilical Catheter (Single Lumen) | 5.0 Fr. | 5/cs |
| S1UVC-6540 | Silicone Umbilical Catheter (Single Lumen) | 6.5 Fr. | 5/cs |

| | | | |
|-----------|--|---------|------|
| S2UVC-436 | Silicone Umbilical Catheter (Dual Lumen) | 4.0 Fr. | 5/cs |
| S2UVC-536 | Silicone Umbilical Catheter (Dual Lumen) | 5.0 Fr. | 5/cs |

"Helping tiny babies make their own footprints in the world..."



12727 Cimarron Path
San Antonio, TX 78249
210.226.2600
www.footprintmed.com